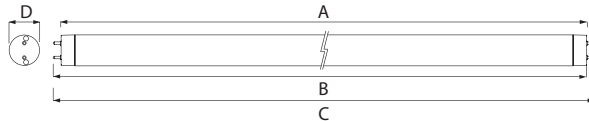


■ **Specifications**

|                                |  |
|--------------------------------|--|
| Operating Input Voltage        | 220 - 240 Vac, 50 - 60Hz   |
| Power Consumption (Typical)    | 9W (LT8B-209EP-8XX)<br>18W (LT8B-418EP-8XX)<br>22W (LT8B-522EP-8XX)                    |
| Power Factor                   | >0.9   |
| Type Of LED                    | SSL Class Low Power 3014 LEDs  |
| Lumen (Typical)                | 800 (LT8B-209EP-8XX)<br>1600 (LT8B-418EP-8XX)<br>2000 (LT8B-522EP-8XX)                 |
| Color Temperature              | 3710K - 4260K (Cool White = LT8B-XYYP-840)<br>6020K - 7040K (Daylight = LT8B-XYYP-865) |
| Color Rendering Index          | >80  |
| Emergency Ballast Lumen Factor | 10%  |
| Operating Temperature          | -30 to 45°C  |
| Storage Temperature            | -40 to 80°C  |
| Operating Humidity             | >90% (RH)  |
| Cap Base                       | G13  |

■ **Outline Drawing**



| Model      | Tube Length | Dim A (Max) | Dim B (Min) | Dim B (Max) | Dim C (Min) | Dim D (Max) |
|------------|-------------|-------------|-------------|-------------|-------------|-------------|
| LT8B-2XXEP | 2FT         | 590mm       | 595mm       | 597mm       | 604mm       | 28mm        |
| LT8B-4XXEP | 4FT         | 1199mm      | 1204mm      | 1207mm      | 1214mm      | 28mm        |
| LT8B-5XXEP | 5FT         | 1500mm      | 1505mm      | 1507mm      | 1514mm      | 28mm        |

# LT8B-EP Installation Guide

■ **Product Information**

The LT8B-EP series is a Light Emitting Diode (LED) T8 tube for general lighting applications such as corridors, staircases, walkways, etc. LT8B-EP T8 tube can also function as emergency lighting when installed with an AZ-elite™ LEP50H Emergency Lighting conversion kit.

■ **Features and Benefits**

*Direct AC input LED T8 tube* – Functions as normal T8 LED tube with no degradation in performance.

*Emergency lighting conversion kit support* – When paired with AZ-elite™ LEP50H Emergency Light conversion kit, LED T8 tube functions as an emergency lighting in Maintained, Non-Maintained or Combine mode.

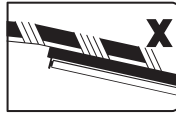
*Ease of maintenance and spare part inventory* – One common model of LED T8 tube for both normal and emergency lighting applications. One common Emergency Lighting conversion kit that supports various lengths of LED T8 tubes (2FT, 4FT and 5FT).

*2hrs Rated Duration in Emergency Mode* – Meets many countries' emergency lighting requirements.

*10% Emergency Ballast Lumen Factor* – Same ballast lumen factor performance as traditional T8 fluorescent tubes.

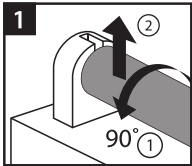
## ■ Notices before Installation

1. Please install the light tube carefully according to the directions given.
2. The light tube is to be fixed properly onto the light fixture, the same way you install a normal fluorescent tube. It may get dislodged if not securely mounted.
3. Do not install near high temperature/combustive objects.
4. Do not install the product on oblique surfaces.

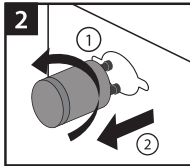


▲ Oblique Surface

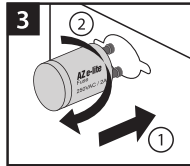
## ■ Installation Illustrations



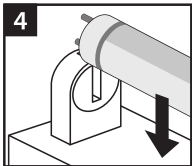
Turn the tube 90° counter clockwise and remove the tube



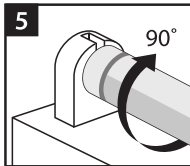
Remove the starter



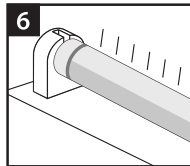
Position AZ e-lite fuse



Plug the tube onto the base

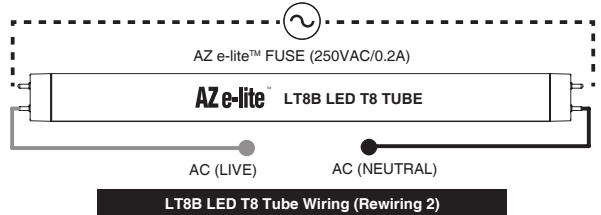
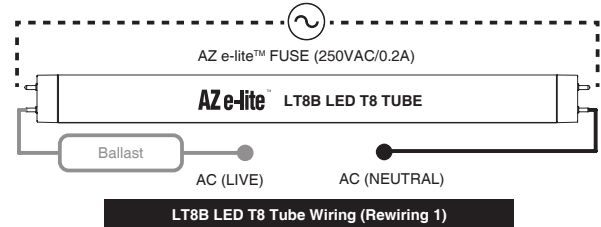


Turn clockwise to secure it



Switch on the power

## ■ Wiring Diagram



## ■ Operation

1. The rated voltage is 220-240V.
2. Do not use in supply voltage exceeding 240V, and promptly switch off in such circumstances.
3. In order to prevent dislodging, electrical shock and blazing, excise caution when installing.
4. In case of operation failure, please switch off the power and contact your nearest AZ e-lite™ dealer.

### ⚠ Warning:

- Please replace starter with included AZ e-lite™ fuse before installing LED light tube.
- AZ e-lite fuse required to work!
- Do not use ballast when paired with LEP50H.