

## AZCEL T8 LED Tube LT8B-E Series Installation Guide

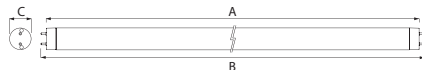
### Notices before Installation

- 1) Please install the light tube carefully according to the directions given.
- 2) The light tube is to be fixed properly onto the light fixture, the same way you install a normal fluorescent tube. It may get dislodged if not securely mounted.
- 3) Do not install near high temperature/combustive objects.
- 4) Do not install the product on oblique surfaces.



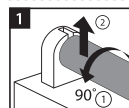
▲ Oblique Surface

### Specifications (Outline Drawing)

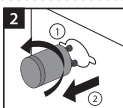


Tube Length	Dim A (Max)	Dim B	Dim C
2FT	589mm	603mm	27mm
4FT	1199mm	1213mm	27mm
5FT	1500mm	1514mm	27mm

### Installation Illustrations



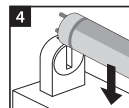
Turn the tube 90° counter clockwise and remove the tube



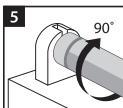
Remove the starter



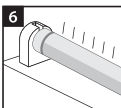
Position AZ e-lite™ fuse



Plug the tube onto the base



Turn clockwise to secure it



Switch on the power

### Operation

- 1) The rated voltage is 100~240V.
- 2) Do not use in supply voltage exceeding 240V, and promptly switch off in such circumstances.
- 3) In order to prevent dislodging, electrical shock and blazing, exercise caution when installing.
- 4) In case of operation failure, please switch off the power and contact your nearest AZ e-lite™ dealer.

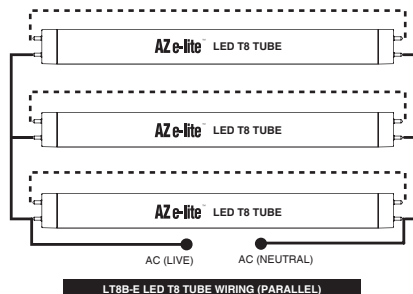
#### ⚠ Warning:

- Please replace starter with included AZ e-lite™ fuse before installing LED light tube.
- AZ e-lite™ fuse is required to work!

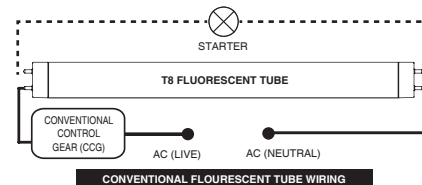
### General

Operating Input Voltage	100 – 240 Vac, 50 - 60Hz
Power Factor	>0.9
Color Temperature	4000K / 6500K
Operating Temperature	-30 to 45 °C
Storage Temperature	-40 to 80 °C
Operating Humidity	>90% (RH)
Cap Base	G13

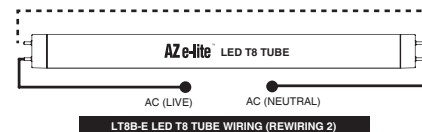
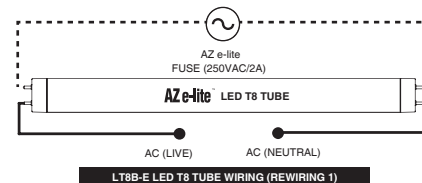
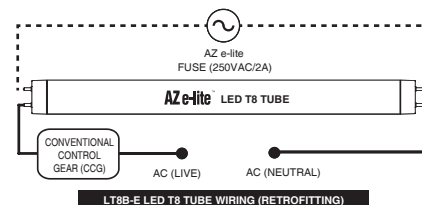
### Wiring Diagram (Parallel)



### Wiring Diagram



### Wiring Diagram



AZ e-lite™ (a member of Aztech Group)

31 Ubi Road 1, #09-01, Singapore 408694

Tel: (65) 6594 2277

Fax: (65) 6749 1198

www.azelite.com